

_ PROTEKTOREN





CRASH PAD® - PROTEKTOREN MIT FÜHRUNGSEIGENSCHAFTEN

Um Schäden zu minimieren, ist das Crash Pad® mit dem eleganten Impact-Einsatz als stoßdämpfendes Element ausgerüstet.

Durch einen konstruktiven Trick gibt das intelligent berechnete Impact-Pad gedämpft nach und entlastet so Halterung und Verschraubung der Konstruktion. Diese Eigenschaft schützt das Motorrad im Bereich der Befestigung des Crash Pads® effektiver vor Schäden.

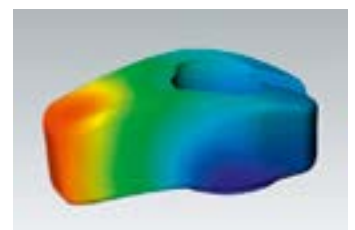
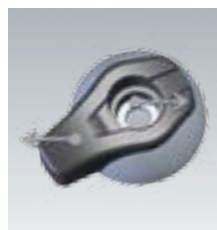
Das Innenteil aus Kunststoff ist wie eine Kufe lang gezogen, so dass die Führungsfunktion verbessert wird. Es federt im Sturzfall den Aufschlag ab und reduziert den Speed des führungslosen Fahrzeuges. Bei leichten Rutschern genügt oft das Auswechseln des Innenteils.

Uli Bonsels, Kundendienstleiter Triumph, zu seinem Sturz beim Street Triple Cup in Hockenheim

„Dank Eurer tollen Crash Pads blieb mein Motorrad, man mag es kaum glauben, fast unbeschädigt und ich konnte das Rennen sofort wieder aufnehmen. Die Crash Pads an Motor, Vorder- und Hinterachse, das Lenkerendgewicht und die Fußraste haben ganze Arbeit geleistet und jeglichen Schaden vom Motorrad fern gehalten. So soll es sein!“

Die Aluminiumaußenschale ist aus dem Vollen gearbeitet und die Oberfläche glänzend beschichtet. Die abgerundete Kontur des Crash Pad®-Kopfes nimmt Fahrbahnsprünge auf; ein Einhaken des rutschenden Fahrzeuges in Fahrbahnstufen (Kanaldeckel etc.) wird wirkungsvoll verhindert. Durch den hohen Kunststoffanteil konnte das Gewicht der Außenschale gering gehalten werden.

Die Crash Pads® werden mit soliden Haltekits für unterschiedliche Modelle angeboten; die Details zu der jeweiligen Ausführung finden Sie umseitig beschrieben.



Die aus der Aufschlagmitte versetzte Schleiffläche erzeugt ein starkes Rückdrehmoment, das das rutschende Fahrzeug in der Richtung hält. Die Computersimulation dient als Berechnungsgrundlage und veranschaulicht den Kraftverlauf im Sturzfall. Sturzerfahrungen aus vielen Jahren Crash Pad® bestätigen diese Funktion.

_ PROTEKTOREN CRASH PADS®

CRASH PAD® ALS SKID PAD

Wer es unauffällig mag oder ein Auge auf das Gewicht hat, kann unser neues Skid Pad montieren. Hierbei wird der Kunststoffgleiter ohne Alu-Schale direkt verschraubt. Das Skid Pad wird komplett mit dem modellspezifischen Anbaukit geliefert und ist hier im Preis enthalten.

Die modellspezifischen Anbaukits sind in der Tabelle (Seite 103) mit **SP** gekennzeichnet.

SP



553 ...

BESTELLBEISPIEL CRASH PAD®

! Crash Pad® Kopf **+** modellspezifisches Anbaukit

CRASH PAD® KOPF WÄHLEN



550-002..



550-002PT



554-SP2-L

CRASH PAD®

Aluschale und Kunststoffeinsatz, Anbausatz wählen und dazu bestellen!

CRASH PAD® KUNSTSTOFF

komplett Kunststoff, Anbausatz wählen und dazu bestellen!

CRASH PAD® EINSATZ

ist einzeln erhältlich, rechts und links unterscheidet sich durch die Ausrichtung des Logos.

| Crash Pad Farbe | Oberfläche | Bestellung |
|-----------------|-------------------|-----------------------|
| schwarz | eloxiert | Art.-Nr. .. SW |
| titan | eloxiert | Art.-Nr. .. TI |
| silber | eloxiert | Art.-Nr. .. SI |
| gold | eloxiert | Art.-Nr. .. GO |
| gelb | pulverbeschichtet | Art.-Nr. .. GE |
| orange | pulverbeschichtet | Art.-Nr. .. OR |
| signalrot | pulverbeschichtet | Art.-Nr. .. SR |
| grün | pulverbeschichtet | Art.-Nr. .. GR |
| weiß | pulverbeschichtet | Art.-Nr. .. WT |
| lasur-rot | lasurbeschichtet | Art.-Nr. .. RT |
| lasur-blau | lasurbeschichtet | Art.-Nr. .. BL |
| chrom | verchromt | Art.-Nr. .. CR |
| carbon look | tauchbeschichtet | Art.-Nr. .. CA |

FARBEN

| Material | Farbe | Oberfläche | Art.-Nr. | EUR |
|--|-------------|-------------------|-----------|-------------|
| Crash Pad Köpfe | | | | Paar |
| Aluminium | schwarz | eloxiert | 550-002SW | 49,95 |
| Aluminium | titan | eloxiert | 550-002TI | 49,95 |
| Aluminium | silber | eloxiert | 550-002SI | 49,95 |
| Aluminium | gold | eloxiert | 550-002GO | 49,95 |
| Aluminium | gelb | pulverbeschichtet | 550-002GE | 49,95 |
| Aluminium | orange | pulverbeschichtet | 550-002OR | 49,95 |
| Aluminium | signalrot | pulverbeschichtet | 550-002SR | 49,95 |
| Aluminium | grün | pulverbeschichtet | 550-002GR | 49,95 |
| Aluminium | weiß | pulverbeschichtet | 550-002WT | 49,95 |
| Aluminium | lasur-rot | lasurbeschichtet | 550-002RT | 49,95 |
| Aluminium | lasur-blau | lasurbeschichtet | 550-002BL | 49,95 |
| Aluminium | carbon-look | tauchbeschichtet | 550-002CA | 49,95 |
| Aluminium | chrom | verchromt | 550-002CR | 69,95 |
| Kunststoff | mattschwarz | | 550-002PT | 35,95 |
| Crash Pad-Einsatz (auch für Skid Pad) | | | | Stk. |
| Kunststoff | schwarz | rechte Seite | 554-SP2-R | 6,95 |
| Kunststoff | schwarz | linke Seite | 554-SP2-L | 6,95 |

CRASH PAD® MODELLSPEZIFISCHE ANBAUKITS

Je nach Motorradmodell werden unterschiedliche Montagevarianten eingesetzt (modellspezifische Anbaukits).

DS, direkt verschraubt mit den Motorhaltebolzen.

RA, mit Adapterplatte verschraubt am Rahmen.

MA, mit Adapterplatte verschraubt über den Motordeckeln.



| Marke und Modell | Typ | Bj. | direkt verschraubt | | | | mit Adapterplatte verschraubt | | | | |
|-------------------------|---------|---------|--------------------|-----|---------|-------|-------------------------------|-----|-----|-------------|--------|
| | | | DS | L/R | SW | Preis | RA | L/R | SW | Preis | |
| Aprilia | | | | | | | | | | | |
| Shiver 750 | RA | 08- | DS | - | 550A019 | - | 35,95 | - | - | - | - |
| Dorsoduro | SM | 08- | DS | - | 550A019 | - | 35,95 | - | - | - | - |
| RSV1000 /Tuono | RR | 06- | - | - | - | - | - | MA | L/R | 550A015.1 | 89,95 |
| RSV 4 | RK | 10- | - | - | - | - | - | RA | - | 550A022.1 | 119,95 |
| Tuono V4R | RK | 11-14 | - | - | - | - | - | RA | - | 550A022.1 | 119,95 |
| Tuono V4 1100 Factory | TY | 15- | - | - | - | - | - | RA | - | 550A022.1 | 119,95 |
| Benelli | | | | | | | | | | | |
| TNT 1130 | TN | alle | - | - | - | - | - | RA | - | 550BE01 | 89,95 |
| BMW | | | | | | | | | | | |
| F 700 GS | E8GS | 13- | DS | L/R | 550B048 | - | 49,95 | - | - | - | - |
| F 800S | E8ST | 06- | - | - | - | - | - | RA | - | 550B032 | 79,95 |
| F 800R | E8ST | 09-14 | - | - | - | - | - | RA | - | 550B032 | 79,95 |
| F 800R | E8ST | 15- | - | - | - | - | - | RA | - | 550B054 | 89,95 |
| F 800ST | E8ST | 06- | - | - | - | - | - | RA | L/R | 550B035 | 79,95 |
| S1000 RR | K46 | 09-11 | DS | - | 550B040 | SW | 35,95 | - | - | - | - |
| S1000 RR | K46 | 12-14 | DS | R | 550B040 | SW | 35,95 | - | - | - | - |
| S1000 RR | K46 | 09-14 | SP | R | 553B040 | SW | 54,95 | - | - | - | - |
| S1000 RR | K10 | 15- | SP | R | 553B051 | - | 54,95 | - | - | - | - |
| K1200R | K12R | 05- | DS | - | 550B029 | - | 29,95 | - | - | - | - |
| Buell | | | | | | | | | | | |
| XB-9R/S /12R/S | 4MZAX | alle | - | - | - | - | - | MA | - | 550BU04 | 149,95 |
| Cagiva | | | | | | | | | | | |
| Raptor 1000 | M200AAY | alle | DS | - | 550C003 | - | 35,95 | - | - | - | - |
| Ducati | | | | | | | | | | | |
| Monster 600 | ZDM600M | alle | DS | - | 550D018 | - | 35,95 | - | - | - | - |
| Monster 696 | M5 | 08- | DS | - | 550D036 | - | 59,95 | - | - | - | - |
| Monster 900 | 900M /A | -01 | DS | - | 550D015 | - | 59,95 | - | - | - | - |
| Monster 900/1000 | M2 /M4 | 02- | DS | - | 550D023 | - | 59,95 | - | - | - | - |
| Monster S4 /S2R /S4R | M400A | alle | DS | - | 550D030 | - | 59,95 | - | - | - | - |
| Monster 1100 | M5 | 09- | DS | - | 550D036 | - | 59,95 | - | - | - | - |
| Hypermotard 1100 | B1 | 09- | DS | - | 550D023 | - | 59,95 | - | - | - | - |
| Multistrada 1200 | A2 | 10- | DS | - | 550D037 | - | 59,95 | - | - | - | - |
| Streetfighter 1098 /848 | F1 | 09-/12- | DS | - | 550D037 | - | 59,95 | - | - | - | - |
| Monster 821 /1200 /S | M6 | 14- | - | - | - | - | - | - | - | 550D048.1SW | 109,95 |
| Honda | | | | | | | | | | | |
| CBR 125 | JC39 | 07-10 | - | - | - | - | - | RA | - | 550H120 | 79,95 |
| CBF 500 | PC39 | 04- | DS | - | 550H102 | - | 45,95 | - | - | - | - |
| CBR 500RA | PC44 | 13-15 | - | - | - | - | - | MA | - | 550H142.1 | 89,95 |

| Marke und Modell | Typ | Bj. | direkt verschraubt | | | | mit Adapterplatte verschraubt | | | | | |
|--|---------------|---------|--------------------|-----|-----------|-----|-------------------------------|-----|-------|-----------|----|--------|
| | | | DS | L/R | Preis | Maß | RA | L/R | Preis | Maß | | |
| DS: direkt mit den Motorhaltebolzen SP: Skid Pad, Montage wie DS L/R: links und/oder rechts muss ein Loch in die Verkleidung gebohrt werden SW: Anbausatz auch in schwarz lieferbar, bitte ergänzen Sie die Art.-Nr. durch „SW“ | | | | | | | | | | | | |
| Honda | | | | | | | | | | | | |
| CB 500FA | PC45 | 13- | DS | - | 550H143 | - | 42,95 | MA | - | 550H142.1 | - | 89,95 |
| Hornet 600 | PC34 /36 | 98-06 | DS | - | 550H080 | - | 29,95 | - | - | - | - | - |
| Hornet 600 | PC41 | 07-/11- | DS | - | 550H118 | - | 35,95 | MA | - | 550H140.1 | - | 89,95 |
| CBF 600 | PC38 | 05-07 | DS | - | 550H080 | - | 29,95 | - | - | - | - | - |
| CBF 600 /N /S | PC43 | 08- | DS | - | 550H122 | - | 35,95 | - | - | - | - | - |
| CBR 600F | PC25 /31 | 91-95 | DS | L/R | 550H046 | - | 29,95 | - | - | - | - | - |
| CBR 600F | PC35 | 99-06 | DS | L/R | 550H086 | - | 29,95 | - | - | - | - | - |
| CBR 600F | PC41 | 11- | DS | L/R | 550H137 | - | 35,95 | MA | - | 550H140.1 | - | 89,95 |
| CBR 600RR | PC37B | 03-06 | DS | L/R | 550H099 | - | 35,95 | - | - | - | - | - |
| CBR 600RR | PC40 | 07-08 | DS | L/R | 550H117 | - | 35,95 | MA | - | 550H117.1 | - | 79,95 |
| CBR 600RR /ABS | PC40 | 09- | DS | L/R | 550H132 | - | 35,95 | - | - | - | - | - |
| CB 650F | RC75 | 14- | - | - | - | - | - | RA | - | 550H155.1 | - | 89,95 |
| CBR 650 | RC74 | 14- | - | - | - | - | - | RA | L/R | 550H156.1 | - | 119,95 |
| NC 700 S / X | RC61 /63 | 12-13 | - | - | - | - | - | MA | - | 550H138.1 | - | 89,95 |
| NC 750 X / XD /S | RC72 /70/90 | 14- | - | - | - | - | - | MA | - | 550H138.1 | - | 89,95 |
| VFR 800X Crossrunner ABS | RC80 | 15- | - | - | - | - | - | MA | - | 550H159.1 | - | 129,00 |
| Hornet 900 | SC48 | alle | - | - | - | - | - | MA | - | 550H097 | - | 89,95 |
| CBR 900RR | SC28 /SC33 | 92-99 | DS | L/R | 550H047 | - | 29,95 | - | - | - | - | - |
| CBR 900RR | SC44 /SC50 | 00-03 | DS | - | 550H090 | - | 29,95 | - | - | - | - | - |
| CBF 1000 | SC58 | 06-09 | DS | - | 550H111 | - | 35,95 | - | - | - | - | - |
| CBF 1000F | SC64 | 10- | DS | - | 550H127 | - | 35,95 | - | - | - | - | - |
| CB 1000R | SC60 | 08- | DS | - | 550H127 | - | 35,95 | - | - | - | - | - |
| CBR 1000RR | SC57 | 04-05 | - | - | - | - | - | RA | - | 550H103 | - | 89,95 |
| CBR 1000RR | SC57 | 06-07 | - | - | - | - | - | RA | - | 550H114 | - | 89,95 |
| CBR 1000RR | SC59 | 08- | - | - | - | - | - | MA | - | 550H125.1 | - | 139,95 |
| CBR 1000RR ABS | SC59 | 09- | - | - | - | - | - | MA | - | 550H131.1 | - | 139,95 |
| VTR 1000F | SC36 | alle | - | - | - | - | - | RA | - | 550H075 | - | 99,95 |
| VTR 1000-SP1 | SC45A | alle | DS | L/R | 550H093 | - | 49,95 | - | - | - | - | - |
| X11 | SC42 | alle | DS | - | 550H091 | - | 35,95 | - | - | - | - | - |
| CBR 1100XX | SC35 | alle | DS | L/R | 550H074 | - | 29,95 | - | - | - | - | - |
| CB 1100 | SC65 | 13- | - | - | - | - | - | RA | - | 550H141.1 | - | 89,95 |
| VFR 1200 | SC63A | 10- | - | - | - | - | - | MA | - | 550H133.1 | - | 169,95 |
| CB 1300 | SC54 | alle | - | - | - | - | - | MA | - | 550H101 | - | 99,95 |
| Hyosung | | | | | | | | | | | | |
| GT 650/S | KM4 | 05- | DS | L/R | 550HY01 | - | 75,95 | - | - | - | - | - |
| Husqvarna | | | | | | | | | | | | |
| Nuda 900 | A7/00/A | 12- | DS | - | 550HU02 | - | 35,95 | - | - | - | - | - |
| Kawasaki | | | | | | | | | | | | |
| Ninja 250R | EX250-K | 08- | - | - | - | - | - | RA | - | 550K132.1 | - | 89,95 |
| Z300 ABS | ER300A | 15- | - | - | - | - | - | - | - | 550K149.1 | - | 99,95 |
| Ninja 300R | EX300A | 13- | - | - | - | - | - | RA | L/R | 550K145.1 | - | 109,95 |
| ZXR-400 | ZX400L | alle | DS | - | 550K053 | - | 29,95 | - | - | - | - | - |
| ZX-6R | ZX600J/ZX636A | 00-02 | DS | L/R | 550K098 | - | 75,95 | - | - | - | - | - |
| ZX-6R/RR | ZX636B/ZX600K | 03-04 | DS | - | 550K101 | - | 29,95 | - | - | - | - | - |
| ZX-6R/RR | ZX636C/ZX600N | 05-06 | DS | L | 550K107 | - | 29,95 | RA | - | 550K107.1 | - | 49,95 |
| ZX-6R | ZX600P | 07-08 | - | - | - | - | - | RA | - | 550K120.1 | - | 79,95 |
| ZX-6R | ZX600R | 09-13 | DS | L/R | 550K131 | - | 29,95 | RA | - | 550K131.1 | - | 75,95 |
| ZX-6R 636 | ZX636E | 13- | DS | - | 550K146 | - | 29,95 | RA | - | 550K146.1 | - | 99,95 |
| ER-6n | ER650A | 05-08 | - | - | - | - | - | RA | - | 550K113 | - | 69,95 |
| ER-6f | EX650A | 06-08 | - | - | - | - | - | RA | L/R | 550K117 | - | 69,95 |
| ER-6n | ER650C | 09-11 | - | - | - | - | - | RA | - | 550K133 | - | 75,95 |
| ER-6F | ER650C | 09-11 | - | - | - | - | - | RA | L/R | 550K134 | - | 75,95 |
| ER-6n /f | ER650E | 12- | - | - | - | - | - | - | - | 550K140.1 | - | 79,95 |
| Versys 650 | LE650A /C | 07-14 | - | - | - | - | - | RA | - | 550K113 | - | 69,95 |
| Versys 650 | LE650E | 15- | DS | - | 550K148 | - | 39,95 | - | - | - | - | - |
| Z 650 | Z650H | 17- | DS | - | 550K155SW | - | i.V. | - | - | - | - | - |
| Z 750 | ZR750J | 04-06 | - | - | - | - | - | MA | - | 550K104 | - | 69,95 |
| Z 750 | ZR750L | 07- | - | - | - | - | - | RA | - | 550K124 | - | 75,95 |
| Z 750R | Z750R | 11- | - | - | - | - | - | RA | - | 550K124 | - | 75,95 |
| Z 800 | ZR800A | 13- | - | - | - | - | - | - | - | 550K144.1 | SW | 79,95 |
| ZX-9R | ZX900E | 00-01 | DS | L/R | 550K091 | - | 69,95 | - | - | - | - | - |
| ZX-9R | ZX900EF | 02-03 | DS | - | 550K099 | - | 29,95 | - | - | - | - | - |
| Z 1000 | ZRT00A | 03-06 | DS | - | 550K102 | - | 35,95 | MA | - | 550K104 | - | 69,95 |
| Z 1000 | ZRT00B | 07-09 | - | - | - | - | - | RA | - | 550K124 | - | 75,95 |
| Z 1000 | ZRT00D | 10- | DS | - | 550K135 | - | 29,95 | RA | - | 550K135.1 | - | 99,95 |
| Z 1000 | ZRT00F | 14- | DS | - | 550K135 | - | 29,95 | RA | - | 550K135.1 | - | 99,95 |
| Z 1000SX | ZXT00G | 11- | DS | L/R | 550K138 | - | 35,95 | RA | - | 550K138.1 | SW | 109,95 |
| Versys 1000 | LZT00A/A/1 | 12-14 | DS | - | 550K143 | - | 34,95 | - | - | - | - | - |
| Versys 1000 ABS | LZT00B | 15- | - | - | - | - | - | RA | - | 550K150.1 | - | i.V. |
| ZX-10R | ZXT00C | 04-05 | - | - | - | - | - | RA | L/R | 550K105 | - | 79,95 |

| Marke und Modell | Typ | Bj. | direkt verschraubt | | | | mit Adapterplatte verschraubt | | | | | |
|----------------------------------|-----------------|-----------|--------------------|-----|---------|----|-------------------------------|-------|----|-------------|----|--------|
| | | | DS | L | SP | MA | RA | L | SW | MA | | |
| Kawasaki | | | | | | | | | | | | |
| ZX-10R | ZXT00D | 06-07 | - | - | - | - | - | RA | - | 550K114 | - | 99,95 |
| ZX-10R | ZRT00E | 08-10 | DS | L | 550K127 | - | 29,95 | RA | L | 550K127.1 | - | 89,95 |
| ZX-10R / ABS | ZRT00J / ZRT00S | 11- / 16- | DS | - | 550K136 | - | 29,95 | RA | - | 550K136.1 | - | 79,95 |
| ZRX 1100 | ZRT10C | alle | - | - | - | - | - | MA | - | 550K096 | - | 65,95 |
| ZRX 1200 | ZRT20A | alle | - | - | - | - | - | MA | - | 550K096 | - | 65,95 |
| ZZR 1200 | ZXT20C | alle | - | - | - | - | - | RA | - | 550K100 | - | 69,95 |
| ZZR 1400 | ZXT40A | 06-11 | - | - | - | - | - | RA | - | 550K115 | - | 99,95 |
| KTM | | | | | | | | | | | | |
| 125 / 200 Duke | IS Duke C3 | 11- | - | - | 550KT17 | - | 59,95 | - | - | - | - | - |
| 390 Duke | IS Duke C3 | 11- | - | - | 550KT16 | - | 59,95 | - | - | - | - | - |
| 990 SuperDuke | VD | 05- | - | - | - | - | - | RA | - | 550KT07.1 | SW | 99,95 |
| 950 Supermoto/ R | | 06- | - | - | - | - | - | RA | - | 550KT07.1 | SW | 99,95 |
| 990 SMT | | -13 | - | - | - | - | - | RA | - | 550KT10.1 | SW | 99,95 |
| 1290 Super Duke R | | 14- | - | - | - | - | - | RA | - | 550KT15.1SW | | 129,95 |
| Moto Morini | | | | | | | | | | | | |
| Corsaro 1200 / Scrambler 1200 | | alle | DS | - | 550MM01 | - | 59,95 | - | - | - | - | - |
| MV Agusta | | | | | | | | | | | | |
| F4 Brutale 750/ 910 S | | -09 | DS | - | 550MV03 | - | 35,95 | - | - | - | - | - |
| Brutale 800 /ABS | | 13- | DS | - | 550MV08 | - | 59,95 | - | - | - | - | - |
| Suzuki | | | | | | | | | | | | |
| GSF 600 | GN77B/JS1A8 | 95-04 | DS | - | 550S064 | - | 69,95 | RA/MA | - | 550S064.1 | - | 69,95 |
| GSX-R 600V | JS1AD/BG | 97-03 | DS | L | 550S082 | - | 29,95 | - | - | - | - | - |
| GSX-R 600 | JS1B2/JS1B3 | 04-05 | DS | - | 550S094 | - | 29,95 | RA | - | 550S097.1 | - | 75,95 |
| GSX-R 600 | WVCE/ WVCV | 06-10 | DS | L | 550S108 | - | 29,95 | MA | - | 550S108.1 | - | 119,95 |
| GSX-R 600 | C3 | 11- | SP | L/R | 553S127 | - | 54,95 | MA | - | 550S127.1 | SW | 119,95 |
| GSR 600 | WVB9 | 06-10 | DS | - | 550S107 | - | 29,95 | RA | - | 550S107.1 | - | 99,95 |
| GSF 650 Bandit | JS1B5 | 05-06 | - | - | - | - | - | RA/MA | - | 550S064.1 | - | 69,95 |
| GSF 650 Bandit | WVCJ | 07- | - | - | - | - | - | MA | - | 550S117.1 | - | 69,95 |
| SV 650 N/S | JS1AV | -02 | DS | - | 550S075 | - | 35,95 | - | - | - | - | - |
| SV 650 N/S | JS1BY | 03- | DS | - | 550S091 | - | 35,95 | RA | - | 550S091.1 | - | 89,95 |
| SFV 650 Gladius | WVCX | 09- | - | - | - | - | - | RA | - | 550S137.1SW | | 129,95 |
| SV 650 | CX | 16- | - | - | - | - | - | RA | - | 550S137.1SW | | 129,95 |
| GSX 650F | | 08- | - | - | - | - | - | MA | - | 550S125.1 | - | 89,95 |
| GSR 750 | C5 | 11- | DS | - | 550S126 | - | 35,95 | RA | - | 550S126.1 | - | 119,95 |
| GSX-R 750V | JS1BD | 97-03 | DS | L | 550S082 | - | 29,95 | - | - | - | - | - |
| GSX-R 750 | JS1B3 | 04-05 | DS | - | 550S094 | - | 29,95 | RA | - | 550S097.1 | - | 75,95 |
| GSX-R 750 | WVCF/WVCV | 06-10 | DS | L | 550S108 | - | 29,95 | MA | - | 550S108.1 | - | 119,95 |
| GSX-R 750 | C4 | 11- | SP | L/R | 553S127 | - | 54,95 | MA | - | 550S127.1 | SW | 119,95 |
| TL1000S | JS1AG | alle | DS | - | 550S065 | - | 35,95 | - | - | - | - | - |
| SV 1000S | JS1BX(132) | 03- | DS | - | 550S093 | - | 29,95 | RA | - | 550S093.1 | - | 89,95 |
| GSX-R 1000 | JS1BL | 01-02 | DS | L | 550S088 | - | 29,95 | RA | - | 550S088.1 | - | 49,95 |
| GSX-R 1000 | JS1BZ | 03-04 | DS | - | 550S094 | - | 29,95 | RA | - | - | - | - |
| GSX-R 1000 | JS1B6 | 05-06 | DS | L | 550S099 | - | 29,95 | RA | - | 550S099.1 | - | 79,95 |
| GSX-R 1000 | JS1CL | 07-08 | DS | - | 550S114 | - | 29,95 | RA | - | 550S114.1 | - | 89,95 |
| GSX-R 1000 | WVCY | 09- | DS | L/R | 550S123 | - | 29,95 | MA | - | 550S123.1 | - | 119,95 |
| GSX-S 1000 | DG | 15- | DS | - | 550S135 | - | 29,95 | - | - | - | - | - |
| GSX-S 1000 F /ABS | DG | 15- | DS | - | 550S136 | - | 29,95 | - | - | - | - | - |
| GSF 1200 | GV75A/JS1A9 | -00/01- | DS | - | 550S064 | - | 69,95 | RA/MA | - | 550S064.1 | - | 69,95 |
| GSX 1200 | JS1A3 | alle | DS | - | 550S064 | - | 69,95 | RA/MA | - | 550S064.1 | - | 69,95 |
| GSF 1250 Bandit | WVCH | 07- | - | - | - | - | - | MA | - | 550S117.1 | - | 69,95 |
| GSX 1250F | | 10- | - | - | - | - | - | MA | - | 550S125.1 | - | 89,95 |
| B-King | WVCR | 07- | DS | L | 550S119 | - | 29,95 | - | - | - | - | - |
| GSX1300 Hayabusa | JS1A1 | 99-07 | DS | L/R | 550S077 | - | 29,95 | - | - | - | - | - |
| GSX1300 Hayabusa | | 08- | DS | L/R | 550S120 | - | 29,95 | - | - | - | - | - |
| GSX 1400 | JS1BN | alle | - | - | - | - | - | MA | - | 550S089 | - | 75,95 |
| Triumph | | | | | | | | | | | | |
| TT600 | H811 | alle | DS | L/R | 550T022 | - | 29,95 | - | - | - | - | - |
| Speed Four | H811 | alle | DS | - | 550T028 | - | 29,95 | - | - | - | - | - |
| Daytona 600 | H835 | 03-05 | DS | L/R | 550T029 | - | 29,95 | - | - | - | - | - |
| Daytona 675 | D67LC | 06-12 | - | - | - | - | - | RA | - | 550T037 | - | 119,95 |
| Daytona 675 | H67 | 13- | - | - | - | - | - | RA | - | 550T055.1 | SW | 109,95 |
| Street Triple 675 | D67LD | 07-12 | - | - | - | - | - | RA | - | 550T041 | SW | 59,95 |
| Street Triple 675 | | 13- | - | - | - | - | - | RA | - | 550T053.1 | SW | 99,95 |
| Street Triple 765 | | 17- | - | - | - | - | - | RA | - | 550T075.1 | SW | i.V. |
| Tiger 800 | | alle | - | - | - | - | - | RA | R | 550T047.1 | - | 119,95 |
| Thruxton /Bonneville / Scrambler | 908MD/986ME | -15 | - | - | - | - | - | MA | - | 550T024 | SW | 79,95 |
| Bonneville T100 | DB01 | 17- | - | - | - | - | - | MA | - | 550T072.1SW | | 119,95 |
| Street Twin / Street Cup | DP01 / DZ01 | 16- | - | - | - | - | - | MA | - | 550T072.1SW | | 119,95 |
| Bonneville T120 | DU01/1/1 | 16- | - | - | - | - | - | MA | - | 550T072.1SW | | 119,95 |
| Thruxton 1200 /R | DE01/1/1 /2 | 16- | - | - | - | - | - | MA | - | 550T072.1SW | | 119,95 |

NEU

NEU

NEU

_ PROTEKTOREN **CRASH PADS®**

| Marke und Modell | Typ | Bj. | direkt verschraubt | | | | mit Adapterplatte verschraubt | | | | |
|------------------------------------|------------|-------|--------------------|-----|-----------|----|-------------------------------|----|-----|-----------|-----------|
| | | | DS | SP | L/R | SW | RA | MA | L/R | SW | |
| Triumph | | | | | | | | | | | |
| Thunderbird | T309RT | alle | DS | - | 550T020 | - | 29,95 | - | - | - | - |
| Sprint RS | T695 | 00-04 | - | - | - | - | - | RA | L/R | 550T018 | - 89,95 |
| Daytona T 595/955i | T595 | 97-01 | - | - | - | - | - | RA | L/R | 550T017 | - 69,95 |
| Daytona T 955i | 595N | 02- | - | - | - | - | - | RA | L/R | 550T025 | - 79,95 |
| Speed Triple | 595N | 97-04 | - | - | - | - | - | RA | - | 550T027 | - 59,95 |
| Speed Triple 1050 | 515N/NJ2 | 05-10 | - | - | - | - | - | RA | - | 550T033 | - 59,95 |
| Speed Triple 1050 | 515N/NJ2 | 05-10 | - | - | - | - | - | MA | - | 550T033.1 | SW 109,95 |
| Speed Triple 1050 (6 Schrauben re) | 515NV | 11- | - | - | - | - | - | MA | - | 550T033.1 | SW 109,95 |
| Speed Triple 1050 (5 Schrauben re) | 515NV | 12- | - | - | - | - | - | MA | - | 550T048.1 | SW 109,95 |
| Tiger 1050 | 115NG | 07-11 | - | - | - | - | - | MA | - | 550T033.1 | SW 109,95 |
| Tiger 1050 | 115NG | 12- | - | - | - | - | - | MA | - | 550T048.1 | SW 109,95 |
| Sprint ST 1050 | 215NA | 05- | - | - | - | - | - | RA | - | 550T018 | - 89,95 |
| Yamaha | | | | | | | | | | | |
| XJ 6 Diversion N /S | RJ19 | 09- | - | - | - | - | - | RA | L/R | 550Y121 | - 75,95 |
| YZF 600R | 4UT | alle | DS | - | 550Y069 | - | 29,95 | - | - | - | - |
| YZF-R6 | RJ03 | -02 | DS | L/R | 550Y079 | - | 29,95 | - | - | - | - |
| YZF-R6 / R6S | RJ05/09 | 03-05 | - | - | - | - | - | RA | - | 550Y089 | - 49,95 |
| YZF-R6 | RJ11 | 06-07 | - | - | - | - | - | RA | - | 550Y104 | - 55,95 |
| YZF-R6 | RJ15 | 08- | - | - | - | - | - | RA | - | 550Y118 | - 59,95 |
| FZS 600 Fazer | RJ02 | -03 | DS | - | 550Y078 | - | 35,95 | - | - | - | - |
| FZ6 / Fazer | RJ07 | 03- | DS | - | 550Y093 | SW | 29,95 | - | - | - | - |
| FZ8 / Fazer | RN25 | 10- | DS | - | 550Y106 | - | 29,95 | RA | - | 550Y124.1 | - 55,95 |
| MT07 | RM04 | 14- | DS | - | 550Y134SW | - | 39,95 | - | - | - | - |
| XSR 900 ABS | RN431 | 16- | DS | - | 550Y129 | SW | 35,95 | RA | - | 550Y129.1 | - 109,95 |
| XSR 700 ABS | RM11 | 15- | DS | - | 550Y134SW | - | 39,95 | - | - | - | - |
| TRX 850 | 4UN | alle | DS | - | 550Y071 | - | 35,95 | - | - | - | - |
| TDM 900 | RN081 | 02-05 | - | - | - | - | - | RA | - | 550Y092 | - 79,95 |
| MT09 /MT09 Tracer | RN29 /F | 13- | DS | - | 550Y129 | SW | 35,95 | RA | - | 550Y129.1 | - 109,95 |
| YZF 1000R | 4VD | alle | DS | - | 550Y070 | - | 29,95 | - | - | - | - |
| YZF-R1 | RN01 | 98-99 | - | - | - | - | - | RA | R | 550Y077 | - 49,95 |
| YZF-R1 | RN04 | 00-01 | - | - | - | - | - | RA | R | 550Y085 | - 49,95 |
| YZF-R1 | RN09 | 02-03 | DS | - | 550Y088 | - | 29,95 | - | - | - | - |
| YZF-R1 | RN12 | 04-06 | - | - | - | - | - | RA | - | 550Y094.1 | - 89,95 |
| YZF-R1 | RN19 | 07-08 | - | - | - | - | - | RA | - | 550Y115.1 | - 89,95 |
| YZF-R1 | RN22 | 09- | DS | L/R | 550Y120 | - | 29,95 | RA | - | 550Y120.1 | - 99,95 |
| YZF-R1M | RN32 | 15- | SP | - | 553Y137 | - | 54,95 | - | - | - | - |
| FZS 1000 Fazer | RN06/14 | -05 | DS | L/R | 550Y086 | - | 35,95 | - | - | - | - |
| FZ1/ FZ1 Fazer | RN16 | 06- | DS | - | 550Y106 | - | 29,95 | RA | - | 550Y106.1 | - 89,95 |
| MT-10 | RN451 | 16- | DS | - | 550Y144SW | - | i.V. | - | - | - | - |
| BT 1100 Bulldog | RP05 | alle | DS | - | 550Y091 | - | 45,95 | - | - | - | - |
| XJR1200/1300 | 4PU /RP19 | alle | DS | - | 550Y073 | - | 29,95 | - | - | - | - |
| V-Max | div. | alle | DS | - | 550Y044 | - | 35,95 | - | - | - | - |
| FJR 1300 | RP04/ RP11 | -05 | - | - | - | - | - | RA | - | 550Y087 | - 139,95 |
| FJR 1300 | RP13 | 06-12 | - | - | - | - | - | RA | - | 550Y111 | - 89,95 |
| MT01 | RP12/ RP18 | 05- | - | - | - | - | - | RA | - | 550Y101 | - 119,95 |

Marketa Janakova auf der LSL Langstrecken Suzuki



ACHS BALLS ALS ACHSPROTEKTOREN

In gleichem Design wie für die Lenker entworfen, gibt es die Crash Balls auch für die Steckachsen der aktuellen Sport Modelle. Die Befestigung erfolgt mittels durchgehender Verschraubung oder Klemmung in den hohlgebohrten Achsen. Sie werden als komplettes Set mit Befestigung und Crash Balls geliefert.

Je nach Motorradmodell werden unterschiedliche Montagevarianten eingesetzt. Mit Stange verschraubt oder mit Gummis geklemmt.



Variante 1: Durch die Achse verschraubt



Variante 2: Mit Klemm-Gummis verschraubt

| EUR 39,95/Achse | Typ | Bj. | vorn | hinten |
|----------------------------|------|-------|-------------|------------|
| Aprilia | | | | |
| SL 750 Shiver /GT (ABS) | RA | 07- | 555A019... | 556A019... |
| SMV 750 Dorsoduro (ABS) | SM | 08- | 555A019... | 556A019... |
| NA 850 Mana /GT (ABS) | RC | 07- | 555A019... | 556A019... |
| RSV 1000R /Factory /Nera | RR | 04-07 | 555A019...* | 556A019... |
| RSV4 R /Factory /APRC | RK | 09- | 555A019...* | 556A019... |
| Tuono 1000R /Factory | RR | 05-10 | 555A019...* | 556A019... |
| Tuono V4 R /APRC | TY | 11-14 | 555A019...* | 556A019... |
| Tuono V4 1100 Factory | TY | 15- | 555A019... | 556A019... |
| BMW | | | | |
| F 800S /ST /R (ABS) | E8ST | 06- | 555B030... | - |
| F 800R (ABS) | E8ST | 06-14 | 555B030... | - |
| F 800R ABS | E8ST | 15- | 555B054... | - |
| S 1000RR /R (ABS) | K10 | 09- | 555B040... | 556B040... |
| S 1000XR (ABS) | K10 | 15- | 555B054... | 556B040... |
| R nineT | R1ST | 14- | 555B030... | - |
| R 1200S (ABS) | R12S | 07- | 555B030... | - |
| Buell | | | | |
| Firebolt/Lightning/City X | XB1 | 03-08 | 555BU04... | 556BU04... |
| Ducati | | | | |
| Monster 696 | M5 | 08- | 555D027... | 556KT07... |
| 749 /R /S | H5 | 02-07 | 555D027... | 556D027... |
| Streetfighter 848 | F1 | 12- | 555D027...* | - |
| 999 /R /S /Xerox | H4 | 03-06 | 555D027... | 556D027... |
| Hypermotard 1100 /S | B1 | 08- | 555D027...* | 556D038... |
| Monster 1100 /S /EVO (ABS) | M5 | 09- | 555D027... | - |

| Achs Ball Farbe | Oberfläche | Bestellung |
|-----------------|-------------------|---------------|
| schwarz | eloxiert | Art.-Nr. ..SW |
| titan | eloxiert | Art.-Nr. ..TI |
| silber | eloxiert | Art.-Nr. ..SI |
| gold | eloxiert | Art.-Nr. ..GO |
| gelb | pulverbeschichtet | Art.-Nr. ..GE |
| orange | pulverbeschichtet | Art.-Nr. ..OR |
| signalrot | pulverbeschichtet | Art.-Nr. ..SR |
| grün | pulverbeschichtet | Art.-Nr. ..GR |
| weiß | pulverbeschichtet | Art.-Nr. ..WT |
| lasur-rot | lasurbeschichtet | Art.-Nr. ..RT |
| lasur-blau | lasurbeschichtet | Art.-Nr. ..BL |

FARBEN

| EUR 39,95/Achse | Typ | Bj. | vorn | hinten |
|----------------------------|----------|-------|-------------|------------|
| Ducati | | | | |
| 1098 /S | H7 | 07-08 | 555D037...* | - |
| Streetfighter 1098 /S | F1 | 09- | 555D037...* | - |
| 1098 R /Bayliss LE | H7 | 08-09 | 555D037...* | - |
| Multistrada 1200 /S (ABS) | A2 | 10- | 555D037... | - |
| Monster 821 | M6 | 14- | 555D037... | 556D049 |
| Monster 1200 /S | M6 | 14- | 555D037... | - |
| Scrambler | K1 | 15- | 555D047... | 556D047 |
| Honda | | | | |
| Hornet 600 (ABS) | PC 41 | 07- | 555H111... | - |
| CBF 600 N/S (ABS) | PC 38/43 | 04- | 555H111... | - |
| CBR 600 F (ABS) | PC 41 | 11- | 555H111... | - |
| CBR 600 RR | PC 37 | 03-06 | 555H099... | 556H090... |
| CBR 600 RR (ABS) | PC 40 | 07- | 555H111... | 556H103... |
| CB 650F | RC75 | 14- | 555H111... | - |
| VFR 800X Crossrunner (ABS) | RC80 | 15- | 555H159... | - |
| CBR 900 RR | SC 44 | 00-01 | 555S099... | 556H090... |
| CBR 900 RR | SC 50 | 02-03 | 555S099... | 556H090... |
| CB 1000 R (ABS) | SC 60 | 08- | 555H111... | - |
| CBF 1000 /F (ABS) | SC 58/64 | 06- | 555H111... | - |
| CBR 1000 RR | SC 57 | 04-07 | 555S099... | 556H103... |
| CBR 1000 RR (ABS) | SC 59 | 08- | 555H125... | 556H103... |
| VTR 1000 SP-1 /SP-2 | SC 45 | 00-05 | 555H099... | 556H103... |
| CBR 1100 XX | SC 35 | 97-07 | 555H111... | - |
| VFR 1200F /mit DCT | SC63 | 10- | 555H125... | - |
| VFR 1200XD Crosstourer | SC70C | 10- | 555H159... | - |

*nur Showa-Gabel

_ PROTEKTOREN ACHS BALLS

| EUR 39,95/Achse | Typ | Bj. | vorn | hinten |
|--------------------------|------------|-------|------------|-----------------|
| Husqvarna | | | | |
| SM 510R | A2 | 09- | 555HU01... | 556HU01... |
| Nuda 900 /R | A7 | 12- | 555HU02... | 556HU02... |
| Kawasaki | | | | |
| ZX-6R Ninja | ZX600P | 07-08 | 555K101... | 556K107... |
| ZX-6R Ninja | ZX600R | 09- | 555K131... | 556K107... |
| ZX-6R Ninja | ZX636B | 03-04 | 555K101... | 556K101... |
| ZX-6R Ninja | ZX636C | 05-06 | 555K101... | 556K107... |
| ZX-6R 636 ABS Ninja | ZX636E | 13- | 555K126... | 556K107... |
| Versys 650 | LE650E | 15- | 555K147... | - |
| Z 650 | ER650H | 17- | 555K135... | 556K155... i.V. |
| Z 750R ABS | ZRT00D | 11- | 555K126... | - |
| Z 800 ABS | ZR800A | 13- | 555K144... | - |
| Versys 1000 | LZT00A | 12- | 555K126... | 556K150... |
| Z 1000 (ABS) | ZRT00B | 07-09 | 555K126... | 556K126... |
| Z 1000 /SX /Tourer (ABS) | ZRT00D/G | 10- | 555K135... | 556K135... |
| Z 1000 | ZRT00F | 14- | 555K147... | 556K135... |
| ZX-10 R ABS | ZXT00S | 16- | 555K101... | 556K107... |
| ZX-10 R Ninja | ZXT00C/D | 04-07 | 555K105... | 556K105... |
| ZX-10 R Ninja | ZXT00E/F | 08-10 | 555K101... | 556K105... |
| ZX-10 R Ninja | ZXT00J | 11- | 555K131... | 556K107... |
| 1400 GTR (ABS) (CBS) | ZGT40A/C | 08- | 555K101... | - |
| ZZR 1400 (ABS) | ZXT40A/C/E | 06- | 555K131... | - |
| KTM | | | | |
| 690 Duke | DUKE | 08-11 | 555KT11... | 556KT07... |
| 990 SMT | LC8SM | 09- | 555KT07... | 556KT07... |
| 990 Super Duke | LC8EFI | 05- | 555KT07... | 556KT07... |
| 1190 RC 8 | RC8 | 08- | - | 556KT07... |
| 1290 Super Duke R | | 14- | 555KT07... | - |
| MV Agusta | | | | |
| F3 675 | F3 | 12- | 555MV05... | - |
| F3 800 ABS | F3 | 14- | 555MV05... | - |
| Brutale 800 ABS | B3 | 14- | 555MV05... | - |
| Suzuki | | | | |
| DR-Z 400 SM | WVB8 | 05-07 | 555S104... | 556S104... |
| GSX-R 600 | WVB2 | 04-05 | 555S097... | 556S097... |
| GSX-R 600 | WVCE/CV | 06-10 | 555S099... | 556S099... |
| GSX-R 600 | C3 | 11- | 555S127... | 556S127... |
| GSX-R 750 | WVB3 | 04-05 | 555S097... | 556S097... |
| GSX-R 750 | WVCF/CW | 06-10 | 555S099... | 556S099... |
| GSX-R 750 | C4 | 11- | 555S127... | 556S127... |
| GSX-R 1000 | WVB6/CL | 05-08 | 555S099... | 556S099... |
| GSX-R 1000 | WVCY | 09-11 | 555S099... | - |
| GSX-R 1000 | WVCY | 12- | 555S130... | - |
| GSX-S 1000 | DG | 15- | 555S127... | 556S135... |

| EUR 39,95/Achse | Typ | Bj. | vorn | hinten |
|--------------------------|-------------|-------|------------|------------|
| Suzuki | | | | |
| V-Strom 1000 ABS | DD | 14- | 555S130... | - |
| SV 1000 /S | WVBX | 03-05 | 555S097... | 556S097... |
| GSF 1250 /S Bandit (ABS) | WVCH | 07- | 555S099... | 556S099... |
| GSX 1250FA | WVCH | 10- | 555S099... | 556Y088... |
| GSX 1300 BK B-King (ABS) | WVCR | 08- | 555S099... | 556S099... |
| GSX 1300 R Hayabusa II | WVCK | 08- | 555S099... | - |
| Triumph | | | | |
| Daytona 675 | D67LC | 06-10 | 555T037... | 556T037... |
| Daytona 675 R | D67LC | 11-12 | - | 556T037... |
| Daytona 675 R ABS | H67 | 13- | 555T037... | 556T037... |
| Bonneville T100 | DB01 | 17- | 555T068... | - |
| Bonneville T120 | DU01/1/1 | 16- | 555T068... | - |
| Street Twin | DP01 | 16- | 555T068... | 556T047... |
| Street Cup | DZ01 | 17- | 555T068... | 556T047... |
| Thrupton /R | DE01/1/2 /1 | 16- | 555T066... | 556T047... |
| Street Triple | D67LD | 08- | 555T037... | 556T037... |
| Tiger 800 | A08 | 11- | 555T037... | 556T047... |
| Daytona T595 /955i | T595/N | 97-05 | 555T027... | - |
| Speed Triple | 595N | 02-04 | 555T027... | - |
| Speed Triple | 515NJ | 05-11 | 555T033... | - |
| Speed Triple (ABS) | 515NV | 11- | 555T037... | - |
| Tiger 1050 (ABS) | 115 NG | 07- | 555T033... | - |
| Tiger 1200 Explorer ABS | V13VG | 12- | 555T066... | - |
| Yamaha | | | | |
| YZF R3 | RH07 | 15- | 555Y140... | 556Y140... |
| FZ 6 /Fazer /S /S2 (ABS) | RJ07/14 | 04- | 555Y105... | 556Y088... |
| YZF-R 6 /S | RJ09 | 03-07 | 555Y088... | 556Y088... |
| YZF-R 6 | RJ 15 | 08- | 555Y118... | 556Y088... |
| MT-07 | RM041 | 14- | 555Y134... | - |
| XSR 900 ABS | RN431 | 16- | 555Y129... | 556Y129... |
| XSR 700 ABS | RM11 | 15- | 555Y134... | - |
| FZ 8 /Fazer 8 (ABS) | RN 25 | 10- | - | 556Y088... |
| MT-09 | RN 29 | 13- | 555Y129 | 556Y129... |
| FZ 1 /Fazer (ABS) | RN16 | 06- | 555Y105... | 556Y088... |
| FZS 1000 Fazer | RN06/14 | 01-05 | 555Y105... | - |
| YZF-R 1 | alle | 02-14 | 555Y088... | 556Y088... |
| YZF-R 1M | RN32 | 15- | 555S130... | 556B040... |
| MT-10 | RN451 | 16- | 555S130... | 556B040... |
| XT 1200Z Super Ténéré | DO015 | 12- | 555Y105... | - |
| XJR 1300 | RP 19 | 07-14 | 555Y105... | 556Y088... |
| XJR 1300 | RP 19 | 15- | 555Y105... | 556Y139... |
| MT-01 /S | RP12/18 | 05- | 555Y105... | 556Y088... |
| V-Max 1700 | RP 21 | 09- | 555Y088... | - |

NEU
NEU
NEU
NEU





LIFTER - PRAKTISCHE FÜHRUNGSROLLEN FÜR DEN MONTAGESTÄNDER

Wer kennt nicht das Gefummel, um die Greifer eines Montageständers in die kleinen Halteknäufe zu bringen. Die Rennteams bei Langstreckenrennen haben dafür schon seit Jahren große Führungsrollen, durch die das Eingreifen des Hebers kinderleicht zu erledigen ist.

LSL bietet diese Erfahrung aus der Langstrecke günstig für Ihr Straßenmotorrad an – als LSL Lifter.

Die LSL Lifter (Ø: 56 mm) sind aus verschleißfestem Kunststoff gefertigt und mit farbigen Trägerbuchsen optisch attraktiv verschraubt.

Alle Lifter werden mit einer 8 mm hohen Distanzbuchse ausgeliefert. Zur Verschraubung werden unterschiedliche Gewinde eingesetzt. Prüfen Sie an Ihrem Motorrad, welches Gewinde benötigt wird.

Übersicht der Gewindeaufnahmen und mögliche Farben:

| Lifter | Art.-Nr. | EUR/Paar |
|-----------|-----------|----------|
| M6 | | |
| anthrazit | 680LB06AN | 29,95 |
| silber | 680LB06SI | 29,95 |
| gold | 680LB06GO | 29,95 |
| M8 | | |
| anthrazit | 680LB08AN | 29,95 |
| silber | 680LB08SI | 29,95 |
| gold | 680LB08GO | 29,95 |
| grün | 680LB08GR | 29,95 |

| Lifter | Art.-Nr. | EUR/Paar |
|--------------------------|------------|----------|
| M8 + 10mm spacer* | | |
| anthrazit | 680LB08DAN | 29,95 |
| silber | 680LB08DSI | 29,95 |
| gold | 680LB08DGO | 29,95 |
| M10 x 1.25 | | |
| anthrazit | 680LB10AN | 29,95 |
| silber | 680LB10SI | 29,95 |
| gold | 680LB10GO | 29,95 |
| grün | 680LB10GR | 29,95 |

* Triumph Daytona 11, Tiger 800, etc.

| Farben Lifter | Kennzeichnung |
|---------------|---------------|
| anthrazit | Art.-Nr. ..AN |
| gold | Art.-Nr. ..GO |
| grün | Art.-Nr. ..GR |
| silber | Art.-Nr. ..SI |

FARBEN

Übersicht der Gewindeaufnahmen für die gängigsten Modelle:

Bitte ergänzen Sie die Art.-Nr. mit der gewünschten Farbkennung.

| Modell | Bj. | Art.-Nr. |
|-----------------------------|-----|------------|
| Aprilia | | |
| SL 750 Shiver | | 680LB06... |
| SMV 750 Dorsoduro | | 680LB06... |
| NA 850 Mana | | 680LB06... |
| ETV 1000 Capo Nord | | 680LB06... |
| RSV 1000 | | 680LB06... |
| RSV4 | | 680LB06... |
| SL 1000 Falco | | 680LB06... |
| Tuono 1000 | | 680LB06... |
| Tuono V4 R | | 680LB06... |
| Dorsoduro 1200 | | 680LB06... |
| BMW | | |
| S 1000RR | | 680LB08... |
| Ducati | | |
| Monster 821 | | 680LB06... |
| 999 /R /S /Xerox | | 680LB08... |
| Honda | | |
| CBR 600/900/1000 RR | | 680LB08... |
| VTR 1000 SP-1 /SP-2 | | 680LB08... |
| Kawasaki | | |
| Ninja 250R /SE | | 680LB10... |
| Ninja 300 | | 680LB10... |
| ZX-6R Ninja | | 680LB10... |
| ZX-6R 636 Ninja | | 680LB08... |
| ZX-6RR Ninja | | 680LB10... |
| ER-6n /f (ABS) / Versys -14 | | 680LB10... |

| Modell | Bj. | Art.-Nr. |
|-----------------------|-----|------------|
| Kawasaki | | |
| Versys 650 ABS | 15- | 680LB08... |
| Z 650 | 17- | 680LB08... |
| Vulcan S ABS | 15- | 680LB10... |
| Z 750 /S /R | | 680LB10... |
| Z 800 ABS | | 680LB08... |
| ZX-9R Ninja | | 680LB10... |
| Z 1000 | | 680LB10... |
| Z 1000 SX | | 680LB10... |
| ZX-10 R Ninja | -15 | 680LB10... |
| ZX 10-R ABS | 16- | 680LB08... |
| ZRX 1100/1200 | | 680LB10... |
| ZX-12R Ninja | | 680LB10... |
| ZZR 1400 (ABS) | | 680LB10... |
| KTM | | |
| 200 / 390 /690 Duke | | 680LB08... |
| 990 SMT | | 680LB08... |
| 990 Super Duke | | 680LB08... |
| 1190 RC 8 | | 680LB08... |
| Suzuki | | |
| GSR 600 | | 680LB08... |
| GSX-R 600 | | 680LB08... |
| DL 650A V-Strom ABS | | 680LB08... |
| SFV 650 Gladius (ABS) | | 680LB08... |
| SV 650 /S / ABS | | 680LB08... |
| GSR 750 | | 680LB08... |

| Modell | Bj. | Art.-Nr. |
|--------------------------|-----|-------------|
| Suzuki | | |
| GSX-R 750/1000 | | 680LB08... |
| GSX-S 1000 | | 680LB08... |
| SV 1000 /S | | 680LB08D... |
| SV 1000 /S | | 680LB08D... |
| V-Strom 1000 ABS | | 680LB08... |
| GSX 1250FA | | 680LB08... |
| GSX 1300 BK B-King (ABS) | | 680LB08... |
| GSX 1300 R Hayabusa | | 680LB08... |
| Triumph | | |
| Daytona 675 | -10 | 680LB06... |
| Daytona 675 | 11- | 680LB08D... |
| Street Triple | | 680LB06... |
| Street Triple R | | 680LB08... |
| Thrupton /R | 16- | 680LB08... |
| Tiger 800 (ABS) | | 680LB08D... |
| Yamaha | | |
| YZF-R 3 | | 680LB06... |
| YZF-R 6 /S | | 680LB06... |
| FZ 8 /Fazer 8 (ABS) | | 680LB06... |
| TRX 850 | | 680LB10... |
| MT-09 | | 680LB06... |
| FZ 1 /Fazer (ABS) | | 680LB06... |
| YZF-R 1 /SP /M | | 680LB06... |
| MT- 10 | | 680LB06... |

NEU